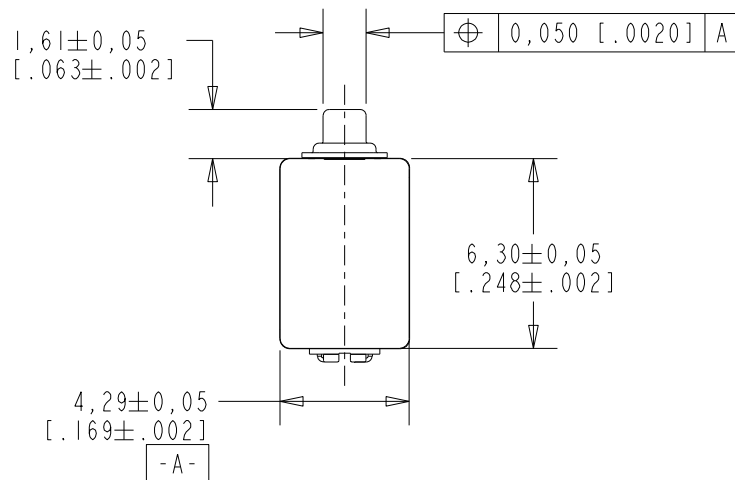


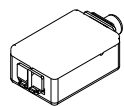
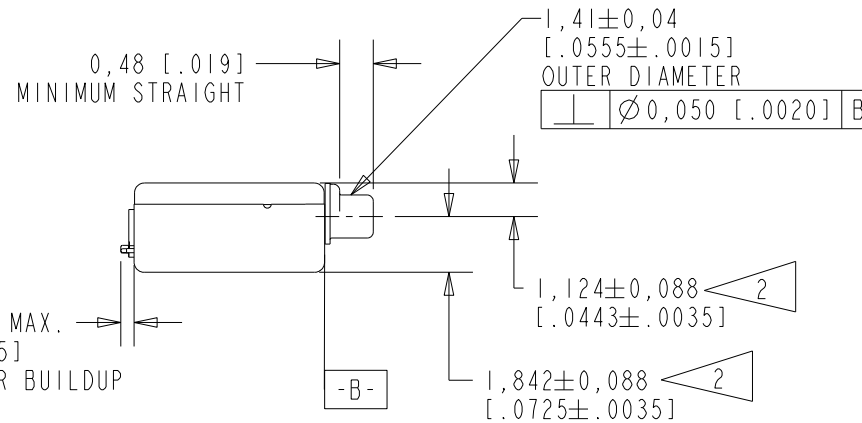
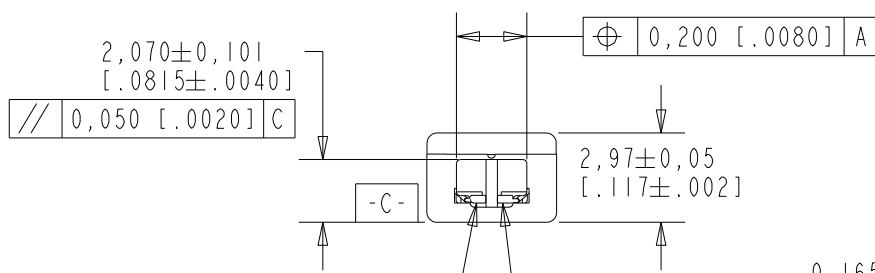
ED-30849-B52

SHT 1.1



NOTE:

- 1 A POSITIVE GOING VOLTAGE AT TERMINAL 2, RELATIVE TO TERMINAL 1, CAUSES A DECREASE IN PRESSURE AT THE SOUND OUTLET.
- 2 LOCATED FROM TWO SURFACES FOR CUSTOMER CONVENIENCE. ONLY APPLICABLE FROM ONE SURFACE, NOT TO BE USED TOGETHER.



1 TERMINAL 1 (NEGATIVE)
2 TERMINAL 2 (POSITIVE)

SCALE 2:1

NOMINAL WEIGHT
.31 GRAMS

DIMENSIONS IN MILLIMETERS [INCHES]

Revision	C.O. #	Implementation Date	RELEASE LEVEL	REVISION
B	PI0000425	3-10-16	Active	B
A	CI0112609	7-28-11		

SCALE: 4:1		DR. BY: KL	DATE: 7-28-11
DO NOT SCALE DRAWING		CK. BY: GJP	DATE: 7-29-11
TITLE: RECEIVER	ED-30849-B52	APP. BY: GJP	DATE: 7-29-11
OUTLINE DRAWING	SHT 1.1		

KNOWLES CORPORATION

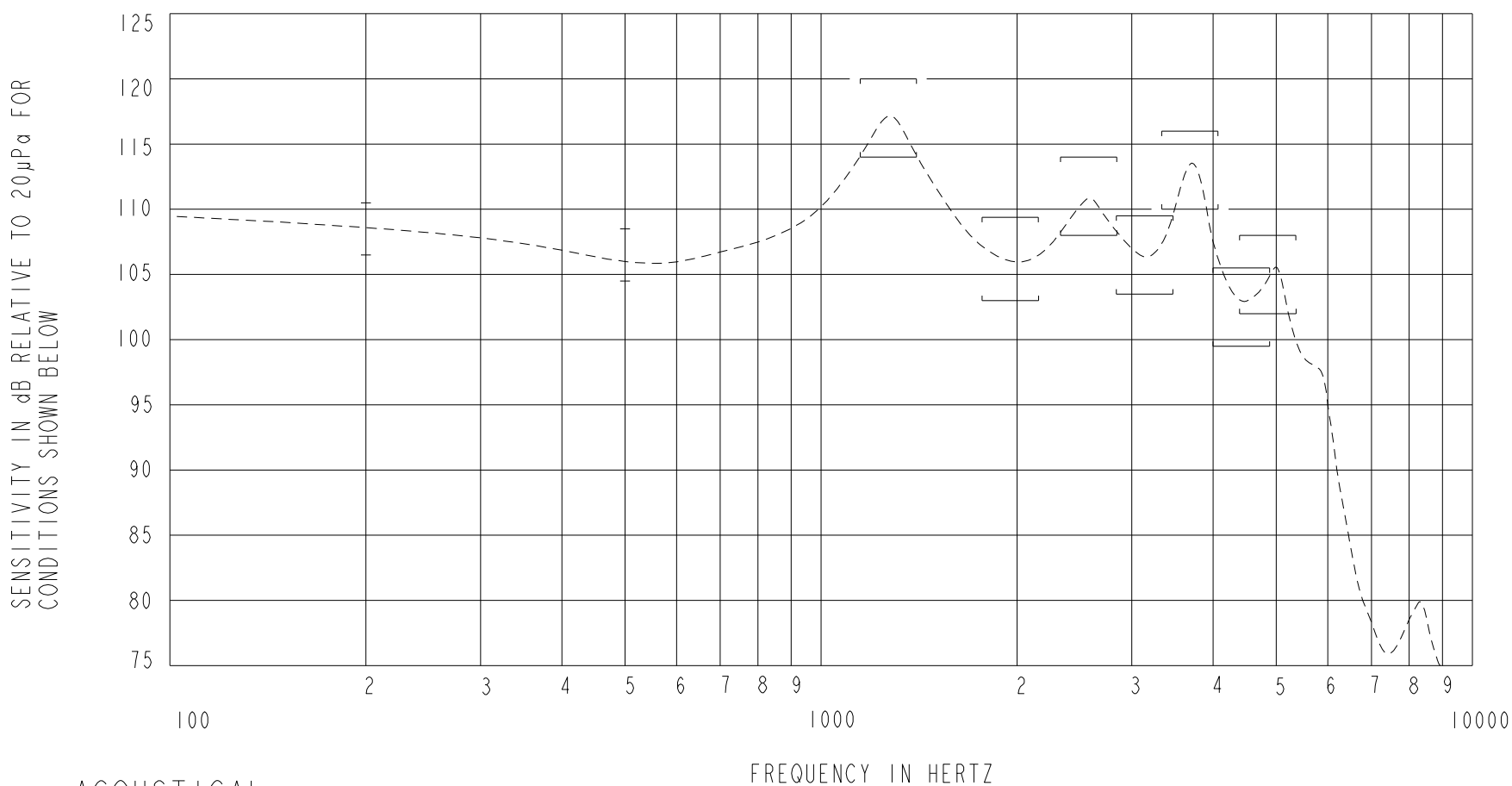
THIS UNIT IS A BALANCED ARMATURE RECEIVER WITH UNSOLDERED CONNECTION PADS INTENDED FOR USE IN BTE HEARING AIDS. NOTICE SPECIAL LIMITS AND DRIVE LEVEL IN THE TEST.

TYPE 1 DAMPING

ED-30849-B52

2.1

CONSTANT VOLTAGE DRIVE CONDITIONS



ACOUSTICAL

SENSITIVITY

DEVICE WILL PRODUCE THE SPL LISTED BELOW UNDER TEST CONDITIONS DESCRIBED IN TABLE 3. NOMINAL SENSITIVITY AT 500Hz IS dB RELATIVE TO 20µPa. ALL OTHER VALUES IN dB RELATIVE TO THE SENSITIVITY AT 500Hz.

FREQUENCY (Hz)	MINIMUM	NOMINAL	MAXIMUM
200	0.0	+2.0	+4.0
500	-2.0	106.5	+2.0
1155-1410	+7.5	+10.5	+13.5
1780-2175	-3.5	-0.5	+2.5
2350-2870	+1.5	+4.5	+7.5
2865-3500	-3.0	0.0	+3.0
3365-4110	-3.5	+6.5	+9.5
4035-4930	-7.0	-4.0	-1.0
4435-5415	-4.5	-1.5	+1.5

TABLE 1

TOTAL HARMONIC DISTORTION

DEVICE WILL NOT EXCEED TOTAL HARMONIC DISTORTION LEVELS LISTED BELOW.

FREQUENCY (Hz)	AC DRIVE (V rms)	DC BIAS (mA)	LIMIT (%)
433	0.50	0	4
650	0.50	0	4
650	1.21	0	10

TABLE 2

TEST CONDITIONS

NOMINAL SOURCE VOLTAGE	0.43 V rms
SOURCE IMPEDANCE	<1 Ohm
TUBING	8mm X 1mm ID + 28mm X 1.5m ID EAR HOOK SIMULATOR + 25mm X 2mm ID TUBE + 18mm X 3mm ID TUBE
COUPLER CAVITY	2 CM ³ , SIMULATED ANSI S3.7 TYPE HA-3 (IEC 60318-5)

TABLE 3

ELECTRICAL

DC RESISTANCE	196 OHMS ± 10%
IMPEDANCE @ 500 Hz	380 OHMS ± 15%
IMPEDANCE @ 1 kHz	740 OHMS ± 15%

TABLE 4

ISOLATION: CASE WILL BE ELECTRICALLY ISOLATED FROM THE COIL CIRCUIT.

MECHANICAL

PORT LOCATION: 12C

SOLDER TYPE: SAC305

TEMPERATURE

OPERATING: SENSITIVITY WILL NOT VARY MORE THAN ± 3dB FROM -17°C TO 63°C
STORAGE: -40°C TO 63°C

Revision	C.O. #	Implementation Date	RELEASE LEVEL	REVISION
B	PI0000425	3-10-16	Active	B
A	CI0112609	7-28-11		
WHEN TEST LIMITS ARE USED TO ESTABLISH INCOMING INSPECTION ACCEPTANCE/REJECTION CRITERIA, CORRELATION OF TEST EQUIPMENT WITH KNOWLES IS ALSO REQUIRED FOR ELIMINATION OF EQUIPMENT AND TEST METHOD VARIATION		DR. BY		
KNOWLES CORPORATION		TITLE: RECEIVER		ED-30849-B52
		PERFORMANCE SPECIFICATION		SHZ. 2.1
		KL	7-28-11	
		GJP	7-29-11	
		APP. BY	DATE	
		GJP	7-29-11	